

STETSON RANCH PARK

Equestrian Improvements & Saddletree Ranch Trailhead

Local Volunteer Neighborhood Oversight Committee (LVNOC) Meeting #3

Tuesday, August 13, 2024



Agenda

1. **Introductions**
2. **Updated Scope of Work**
 - Stetson Ranch Equestrian Improvements
 - Rim of the Valley (ROTV) Saddletree Ranch Trailhead
3. **Scope of Work Summary**
4. **Project Schedules**
5. **Community Input**
 - LVNOC Discussion
 - Community Comments & Questions
 - LVNOC Vote on Updated Scope of Work (Action Item)
6. **Conclusion**

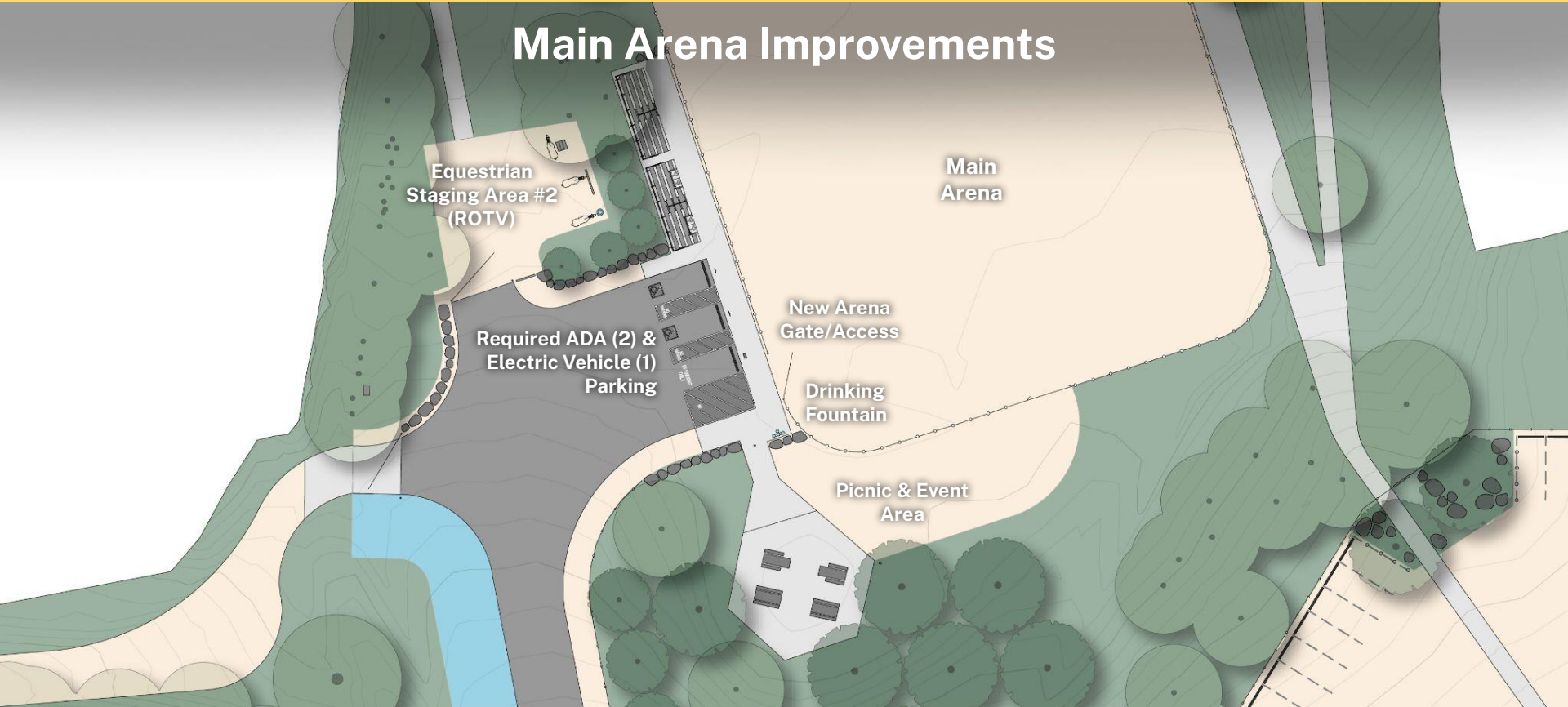
PROJECT #1
Stetson Ranch
Equestrian
Improvements

PROJECT #2
Rim of the Valley
SUBPROJECT #5:
Saddletree Ranch
Trailhead at
Stetson Ranch

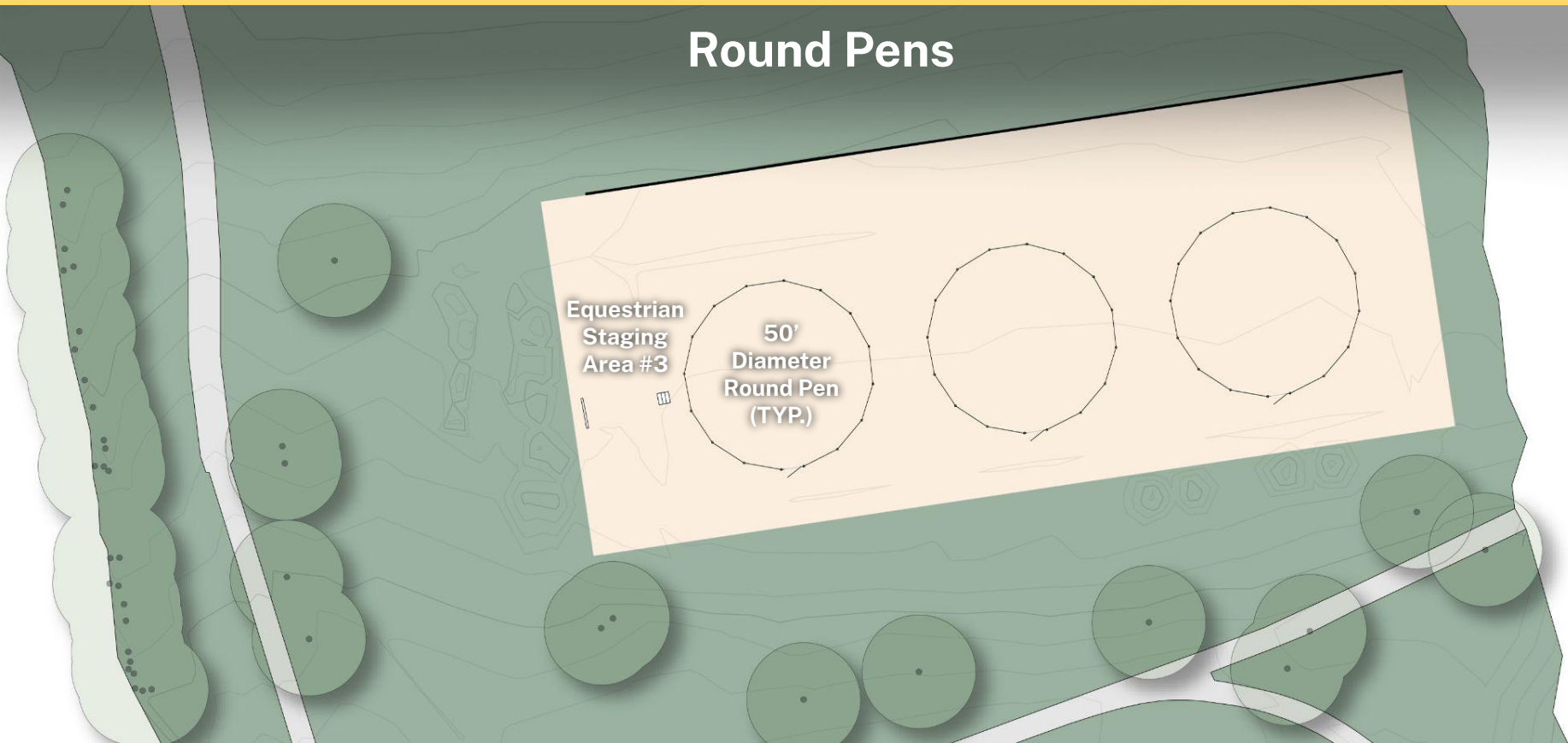
Updated Scope of Work

1. Lighting/Security Cameras and New Overhead Electrical Service
2. Round Pens (3)
3. Arena Lighting
4. Upgraded Outlets for PA System
5. Parking Area Enhancements: Grading, Soil Stabilization, Layout, and Signage
6. Required Parking & Associated Paved Road
 - (2) ADA Parking Spaces
 - (1) EV Charging
7. Trail Grading & Required Drainage Improvements
8. Access Road Erosion Control
9. Updated Irrigation System
10. Decorative Gateway Feature at Entrance

Main Arena Improvements



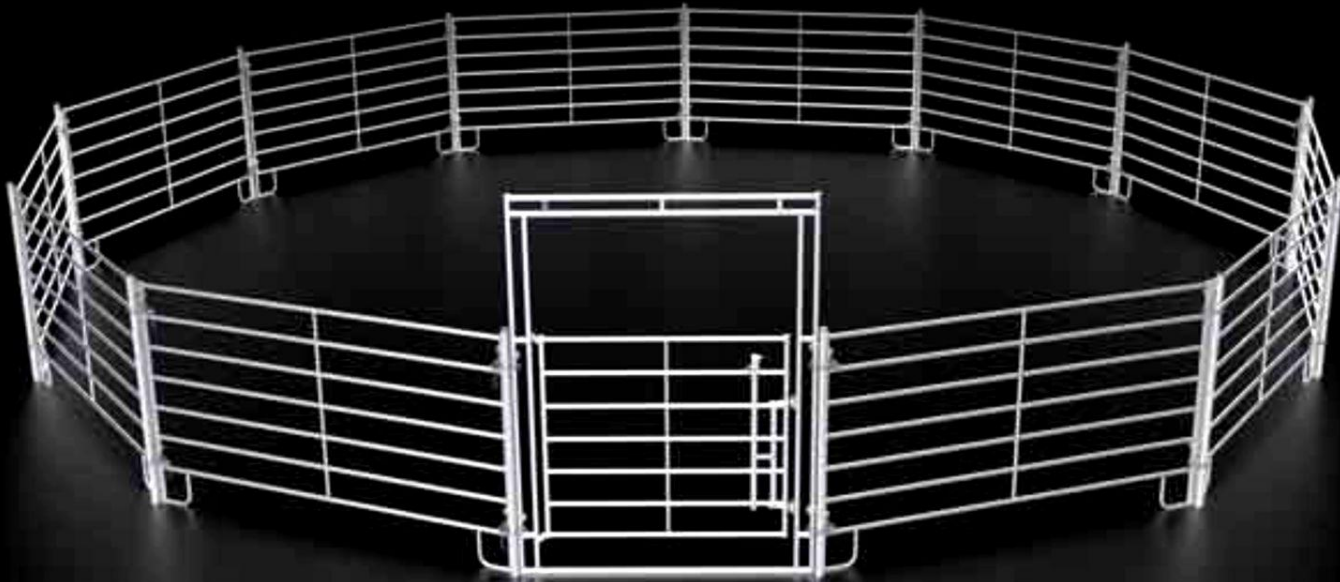
Round Pens



Equestrian
Staging
Area #3

50'
Diameter
Round Pen
(TYP.)

Round Pens





Parking Area Improvements

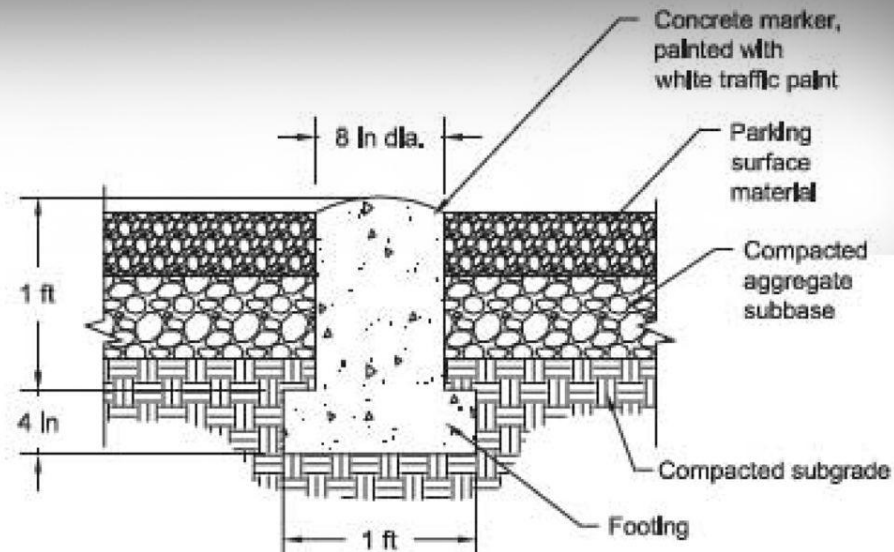
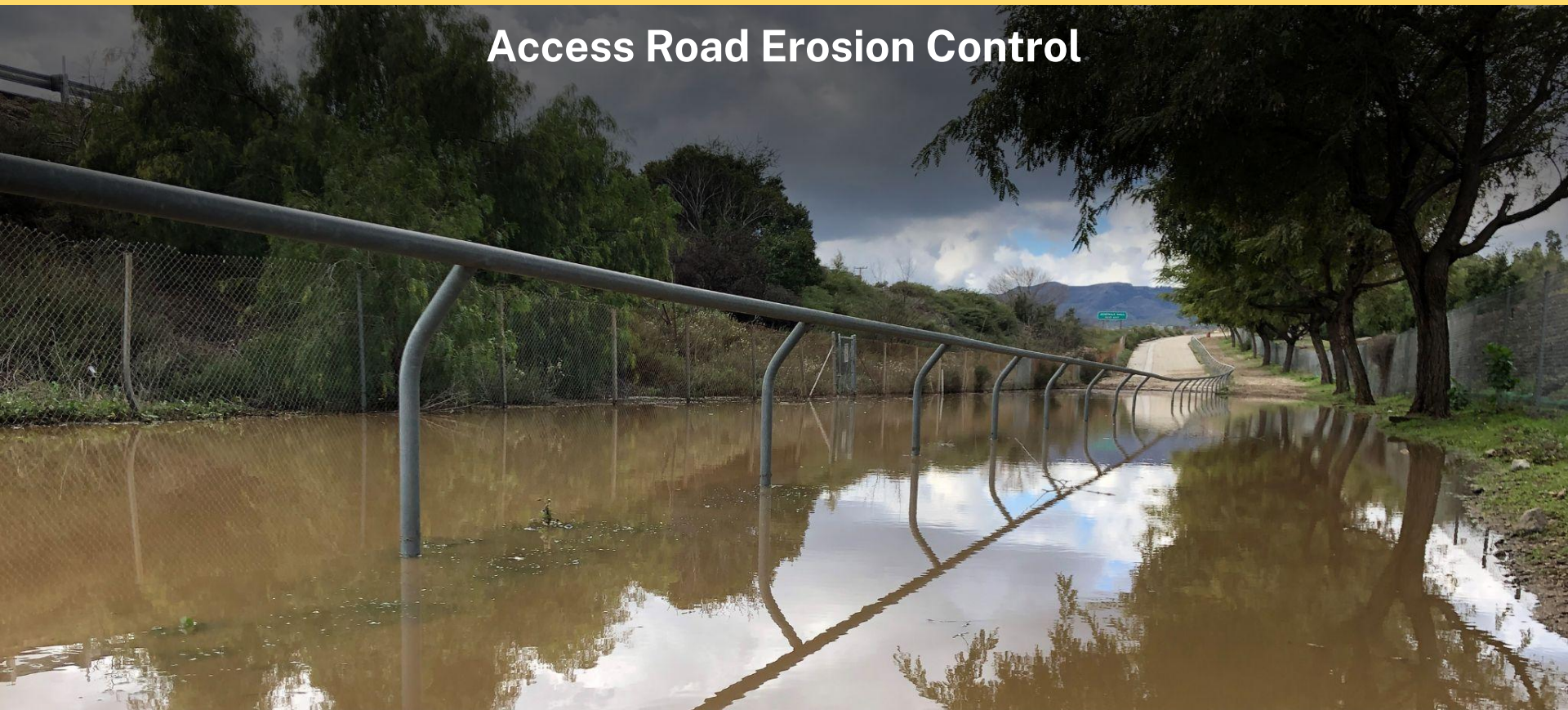


Figure 8-17—A concrete parking marker.

Parking Area Improvements



Access Road Erosion Control



Access Road Erosion Control

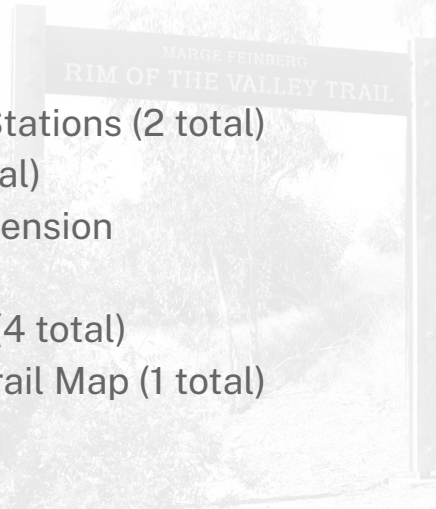


Decorative Gateway Feature at Park Entrance



Updated Scope of Work

1. Fencing/Barriers
 - 5-Rail Composite Fencing Surrounding Parking Lot
 - Rhino/Barrier Gates and Boulders at Trail Entry Points
 - Step Over Barriers (2 total)
2. Hitching Posts (4 total)
3. Mounting Blocks (3 total)
4. Drinking Fountains/Hydration Stations (2 total)
5. Equine Watering Stations (2 total)
6. Water Supply Line Repair & Extension
7. Signage
 - Directional Trail Signage (4 total)
 - Informational Sign with Trail Map (1 total)



Trail Entrance Improvements / New Barrier Gates



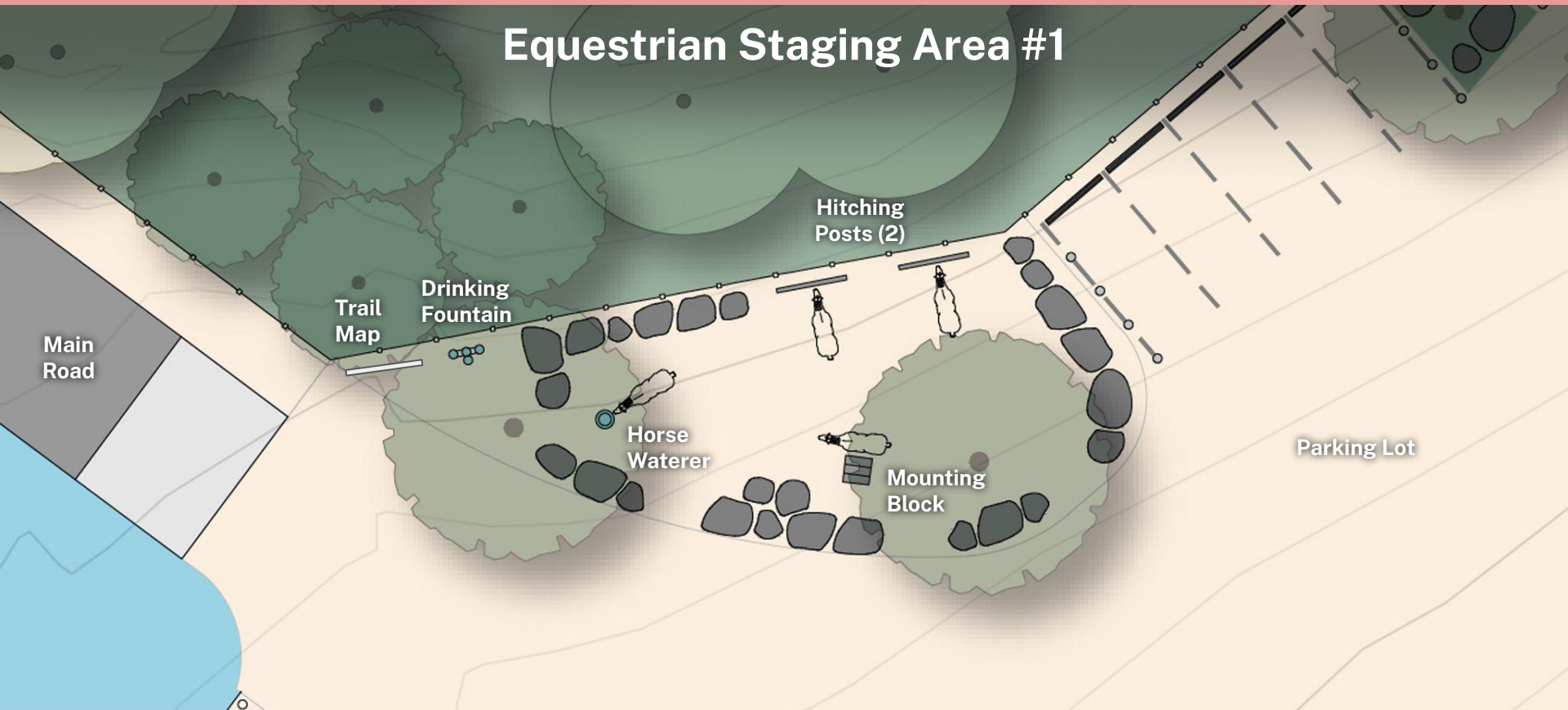
Step Over Barrier



5-Rail Split-Rail Composite Fencing (Approx. 390 linear feet)



Griffith Park / Griffith Observatory
Los Angeles, CA



Equestrian Staging Area #1

Main Road

Trail Map

Drinking Fountain

Hitching Posts (2)

Horse Waterer

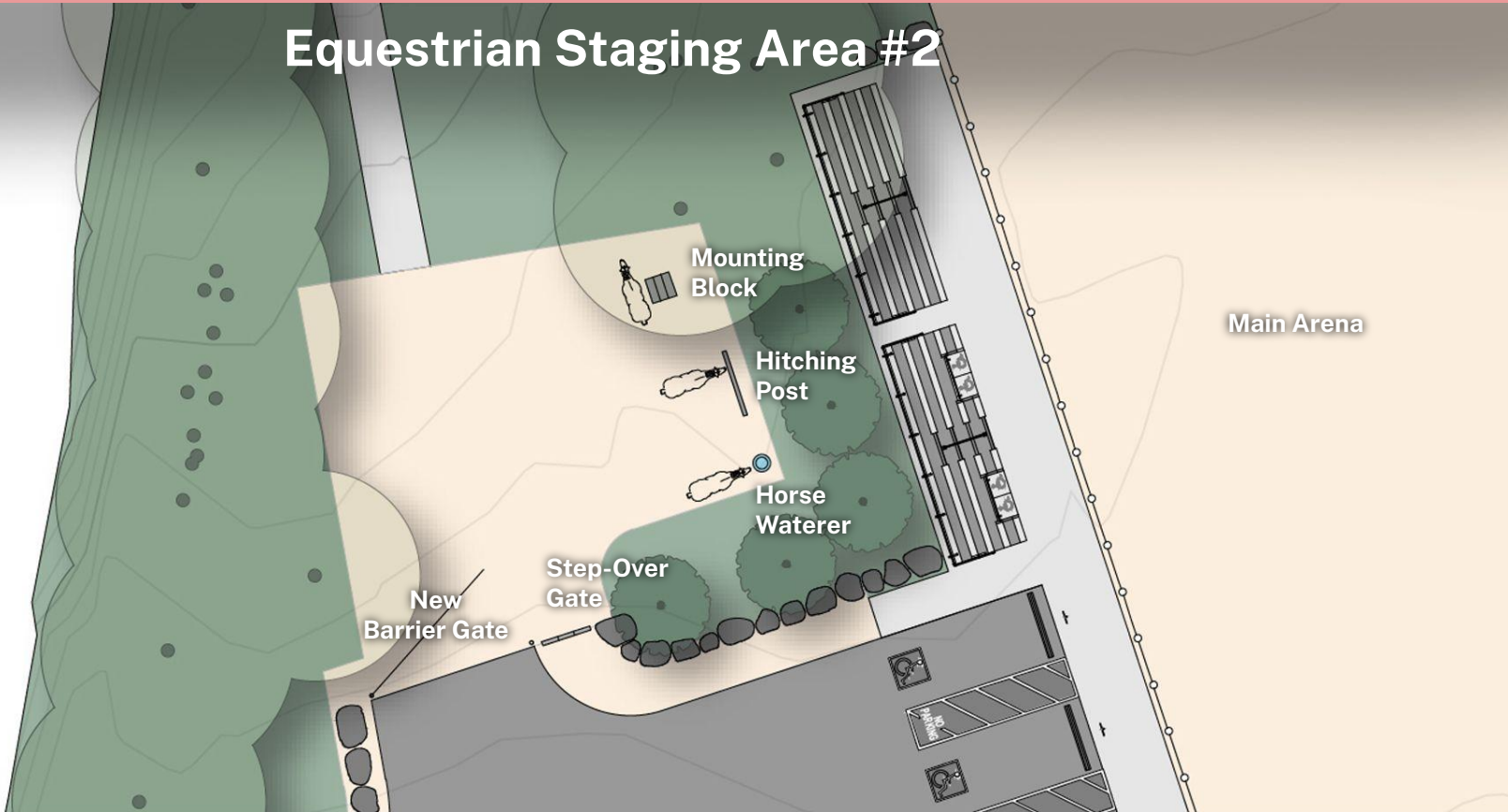
Mounting Block

Parking Lot

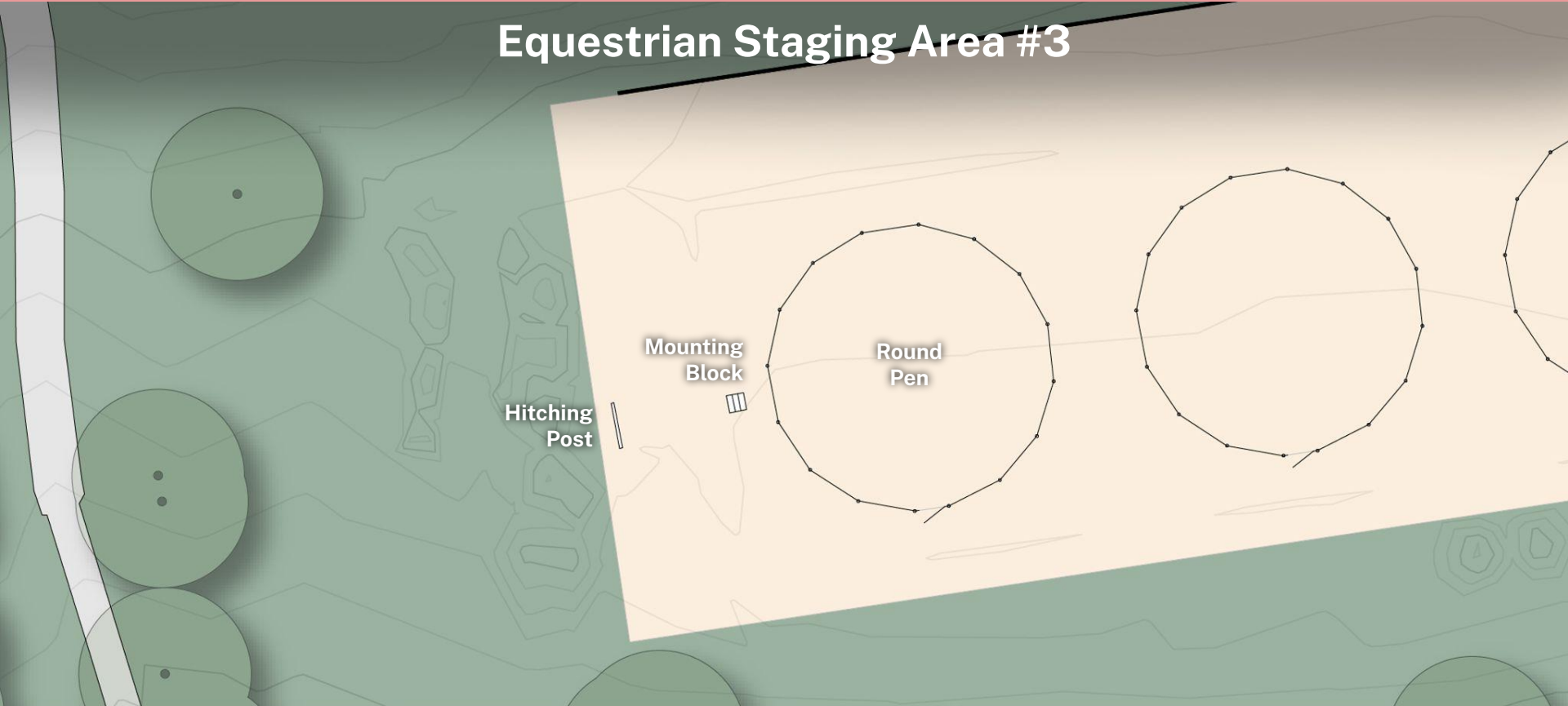
Equestrian Staging Area #1 Concept



Equestrian Staging Area #2



Equestrian Staging Area #3



Hitching Posts & Mounting Blocks



Equine Watering Stations

A Nelson installed in a concrete pipe can handle the most demanding animals.

SERIES
700
WATERERS



Drinking Fountains

The screenshot shows the Murdock website interface. At the top, the logo 'murdock SINCE 1953 Lifestyle' is on the left, and navigation links 'Products', 'Resources', 'Learn', 'News', 'About', and 'Contact' are in the center. A search icon is on the right. Below the navigation, a breadcrumb trail reads 'Home / Products / Outdoor Drinking Fountains'. The main product title is 'Bi-Level Outdoor Drinking Fountain with Water Bottle Filling Station - ADA, Stainless Steel'. Below the title are links for 'Model Number: GYQ84 Series', 'MODELS', 'SPECS', 'DOWNLOADS', and 'OPTIONS'. The central image is a 3D rendering of a green, bi-level drinking fountain with a water bottle filling station. Below the main image is a row of six small thumbnail images showing the fountain in different colors: grey, green, blue, dark green, light blue, and red. Below the thumbnails, the text 'GYQ84 SERIES' is displayed, followed by the product name 'Bi-Level Outdoor Drinking Fountain with Water Bottle Filling Station - ADA, Stainless Steel'.

Directional Signage & Trail Map



Marge Feinberg Rim of the Valley Trail Saddletree Ranch Trailhead

MARGE FEINBERG'S 1974 MASTER'S THESIS ENVISIONING A WILDERNESS TRAIL encircling the San Fernando, La Crescenta and Simi Valleys and adjacent mountain ranges led to a California law establishing the Rim of the Valley Trail Corridor in the Santa Monica Mountains Conservancy Zone. Her more than twenty-five years of tireless volunteer efforts encouraged the formation of an interlinking system of parks, trails, open space, wildlife habitat, and recreational opportunities within the mountain areas. In 2000, State Senator Sheila Kuehl introduced legislation that named the backbone of that system—and the thread that will one day tie it together—the Marge Feinberg Rim of the Valley Trail.

What does the Rim of the Valley Trail Corridor include?

The Rim of the Valley Trail Corridor is the name given to the Conservancy's jurisdictional boundary encircling the edges of the San Fernando, La Crescenta, and Simi Valleys to the south, and large portions of the Santa Clara River from its headwaters by Palmdale, to the Santa Clarita Woodlands by the City of Hewlett. The Rim of the Valley is integral with the protected lands and trail systems of the Angeles National Forest.

The Rim of the Valley Trail Corridor as a Regional Network of Wildlife Habitats

The San Gabriel, Verdugo, and Santa Monica Mountains, along with the Simi Hills, form the core of the Rim of the Valley Trail Corridor. One or two narrow connections, either under or over a freeway, still allow wildlife to move between each of these mountain ranges. These "wildlife corridors," all of which remain vulnerable to development, are critical to ensure the long-term presence of larger animals, such as the bobcat, American badger, mule deer, grey fox, long-tailed weasel, and, particularly, the mountain lion.

Species shown in images: Golden-crowned Kinglet, Yellow Pincushion, Hummingbird Fly, California Poppy, Ground Squirrel, Cottontail, Mule Deer, Coyote, Bobcat.

Logos: Santa Monica Mountains Conservancy, Mountains Recreation and Conservation Authority, MRCRA, City of Los Angeles, Los Angeles County Regional Open Space District.

Contact: In case of emergency dial (911) For Ranger Services call (301) 456-7049



Stetson Ranch Equestrian Improvements

1. Lighting/Security Cameras and New Overhead Electrical Service
2. Round Pens (*two; move to open area north*)
3. Arena Lighting (*medium level for security/safety*)
4. Upgraded Outlets for PA System
5. Parking Area Enhancements: Grading, Soil Stabilization, Layout, and Signage
 - a. *Removed lower tree/boulder area*
6. Required Parking
 - a. (2) ADA Parking Spaces
 - b. (1) EV Charging Space
7. Trail Grading & Drainage Improvements
 - a. *Keep trail from main arena to parking area*
8. Access Road Erosion Control
9. Updated Irrigation System
10. Decorative Gateway Feature at Entrance

Rim of the Valley - Saddletree Ranch Trailhead

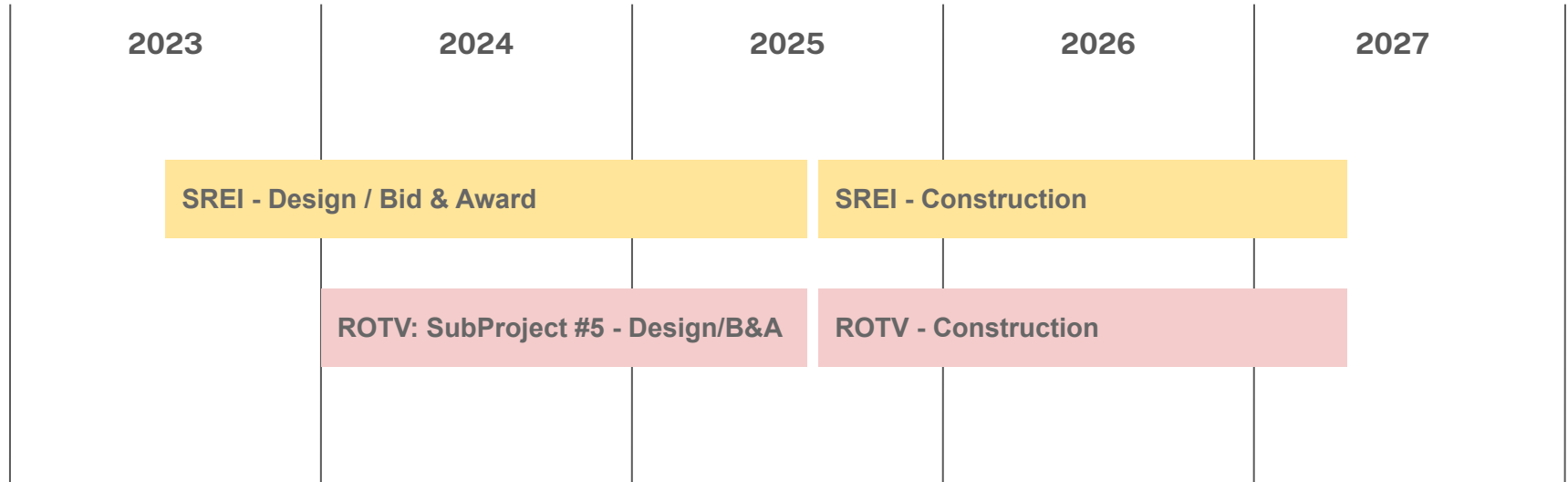
1. Fencing/Barriers Surrounding Parking Lot and Trail
2. Hitching Posts (4)
3. Mounting Blocks (3)
4. Hydration Stations (2)
5. Equine Water Stations (2)
6. Water Supply Line Repair & Extension
7. Informational & Directional Signage

Add/Alternates:

1. New Bleachers
2. Picnic Area Furniture
3. Extended/Connected Asphalt Road
4. Shade Structures
 - a. Bleachers
 - b. Picnic Area

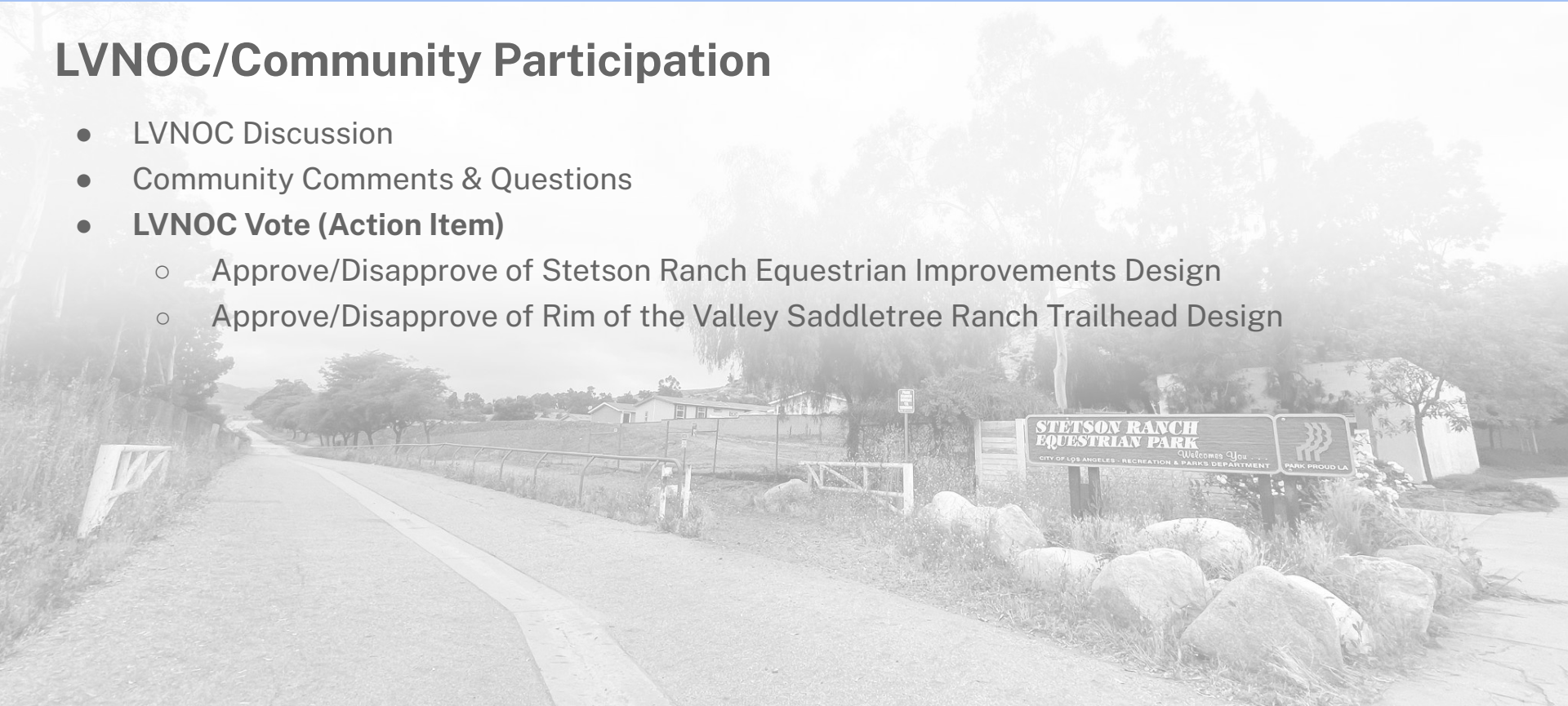
ADD/ALTERNATE New Bleachers & Shade Structure





LVNOC/Community Participation

- LVNOC Discussion
- Community Comments & Questions
- **LVNOC Vote (Action Item)**
 - Approve/Disapprove of Stetson Ranch Equestrian Improvements Design
 - Approve/Disapprove of Rim of the Valley Saddletree Ranch Trailhead Design





THANK YOU!

